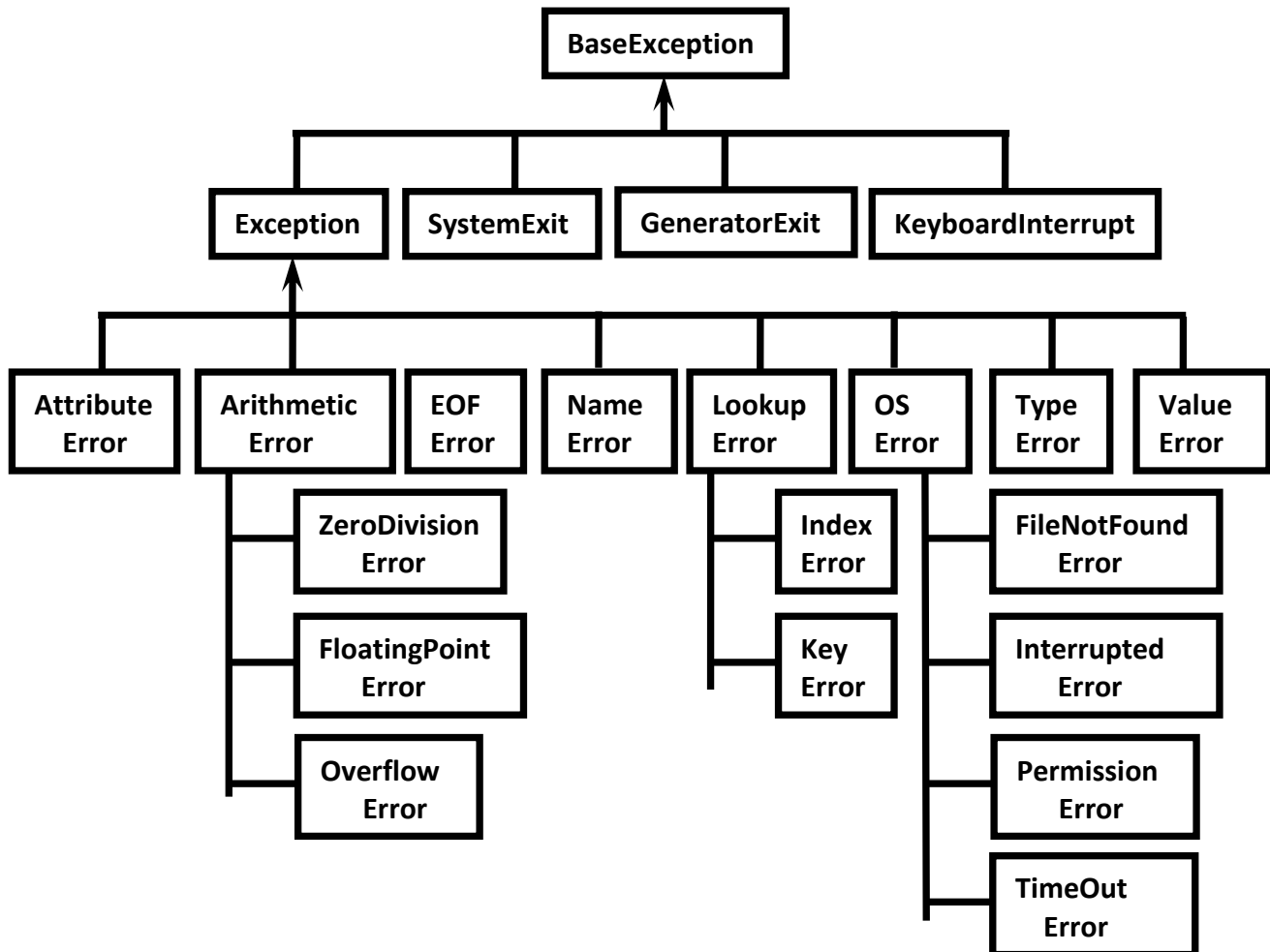




Python's Exception Hierarchy



Every Exception in Python is a class.

All exception classes are child classes of BaseException.i.e every exception class extends BaseException either directly or indirectly. Hence BaseException acts as root for Python Exception Hierarchy.

Most of the times being a programmer we have to concentrate Exception and its child classes.

Customized Exception Handling by using try-except:

It is highly recommended to handle exceptions.

The code which may raise exception is called risky code and we have to take risky code inside try block. The corresponding handling code we have to take inside except block.